

# 40' THE FAWN

3 | 2.5 | 2

ELEVATION B | 2209 SQ.FT.



# 40' THE FAWN

3 | 2.5 | 2

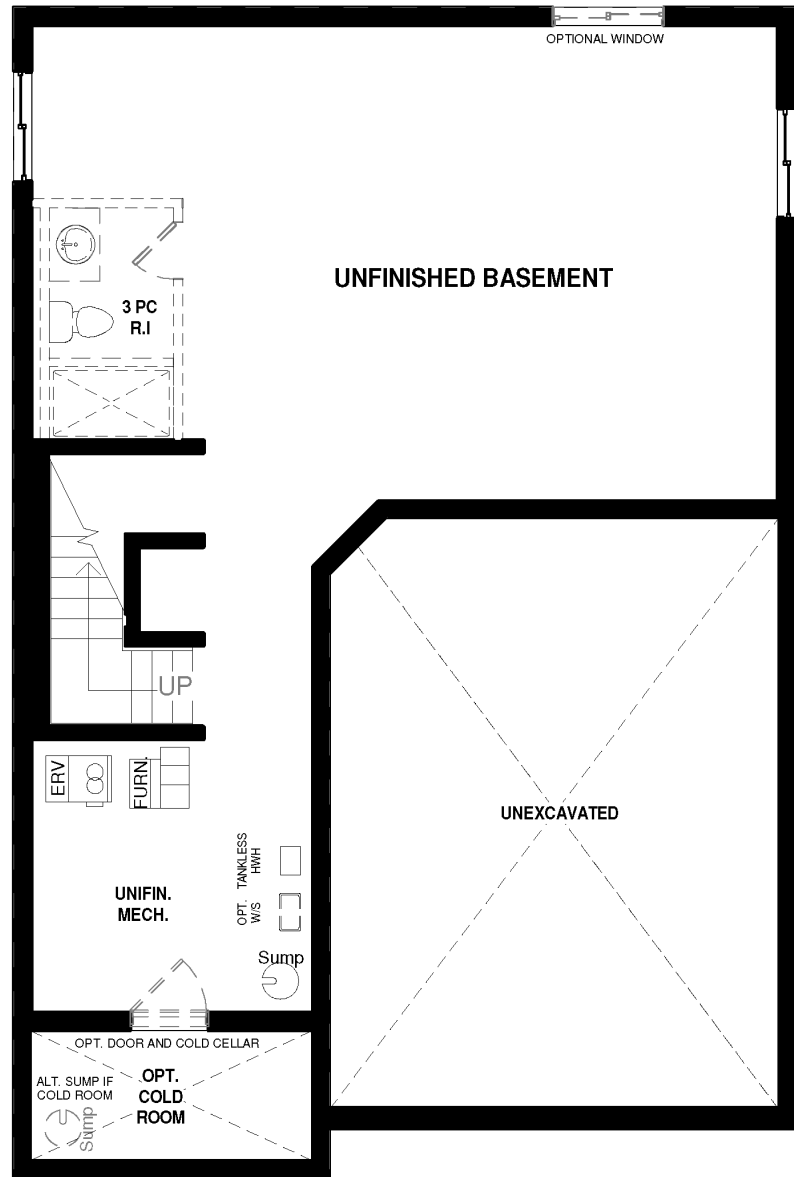
ELEVATION A | 2209 SQ.FT.



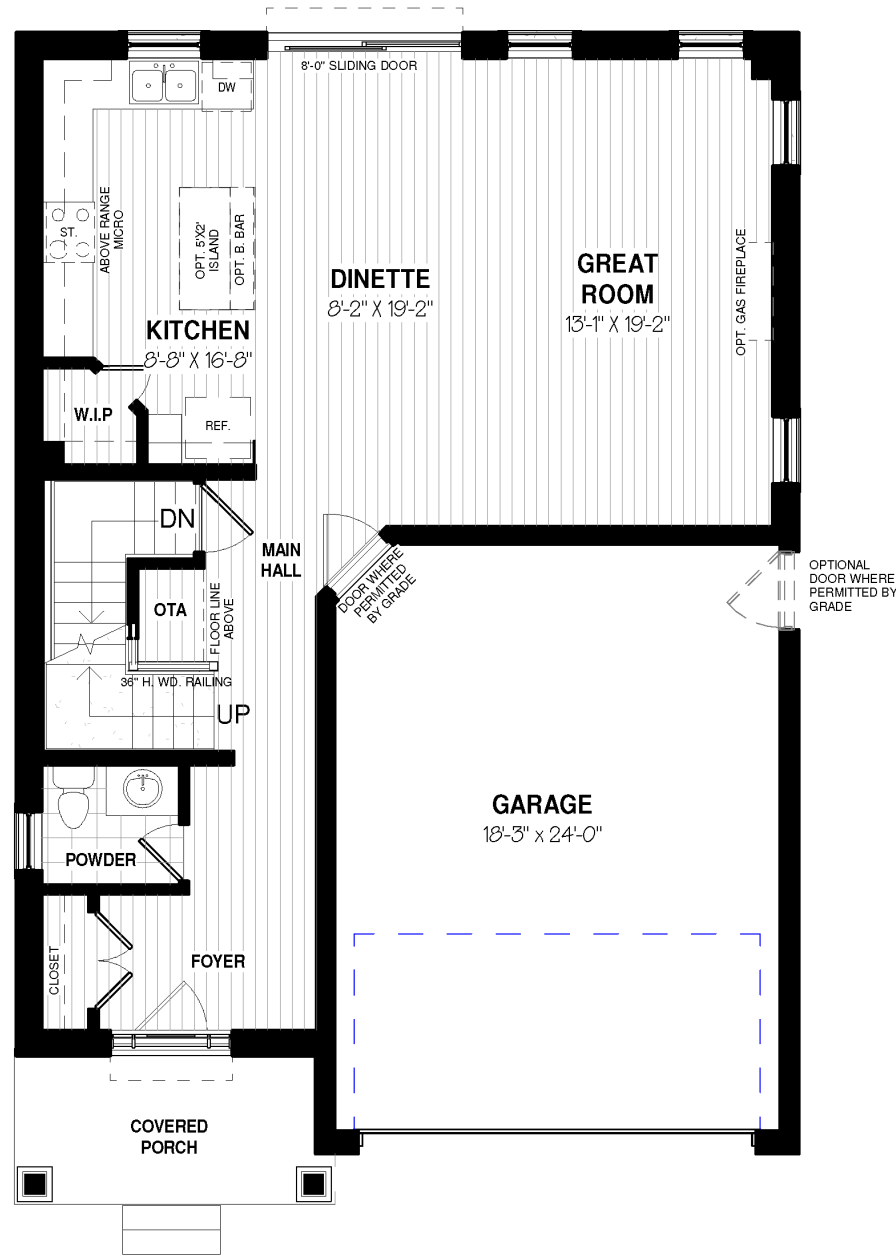
Renderings are artist's concept and may show upgraded or optional features not included with standard design. Floor plan may be mirrored. Dimensions, specifications and architectural detailing are subject to minor modifications. Indicated square footage may vary and may include open to above or open to below space. Final location of sump pump is based on site conditions, building code and zoning. See Sales Representative for Details. Broker Protected. E. & O.E. May 2024

WESTWOOD VILLAGE PRESERVE

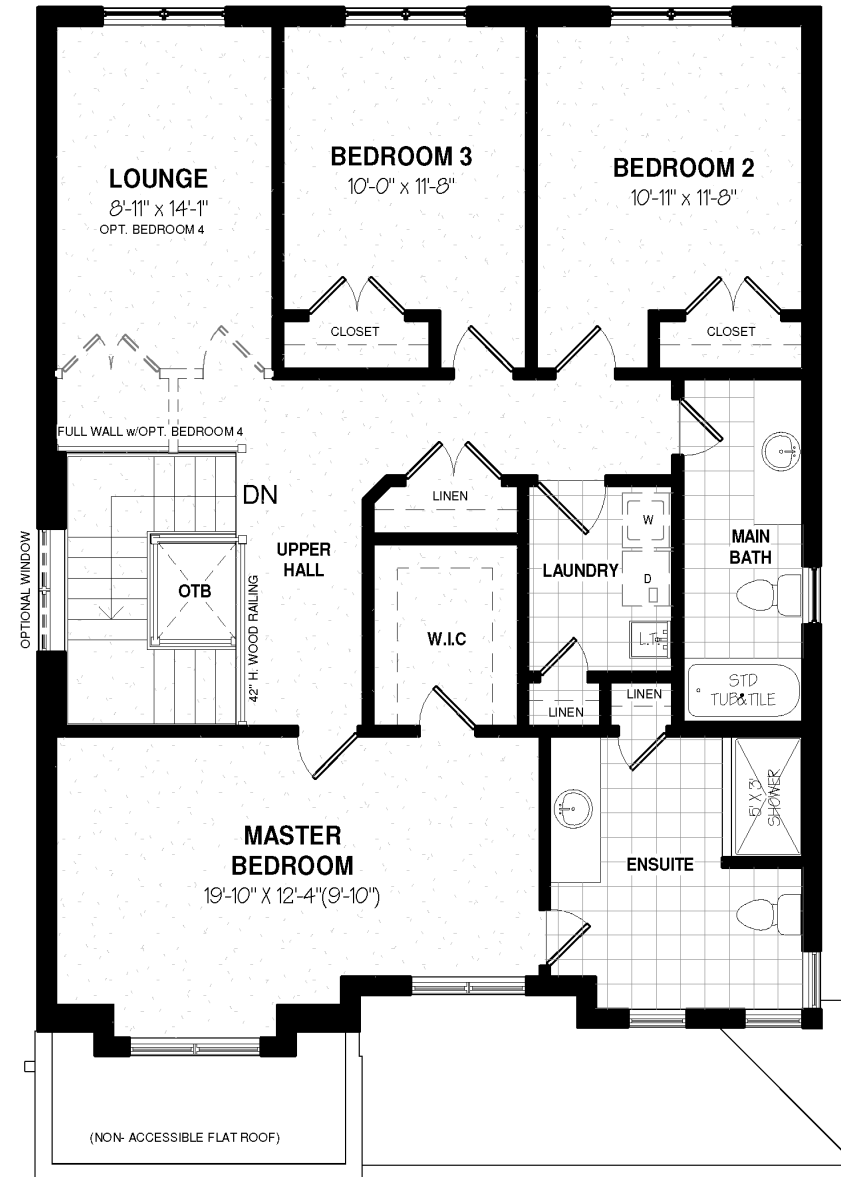




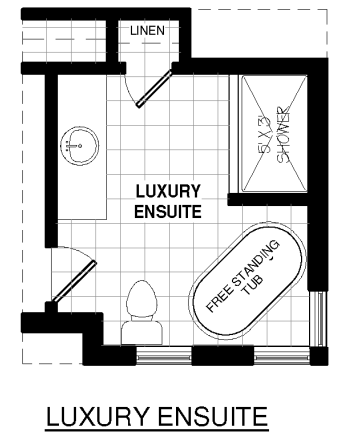
**BASEMENT FLOOR PLAN**



**MAIN FLOOR PLAN-943 sq.ft.**



**SECOND FLOOR PLAN-1254 sq.ft.  
OTB-12 sq.ft.**



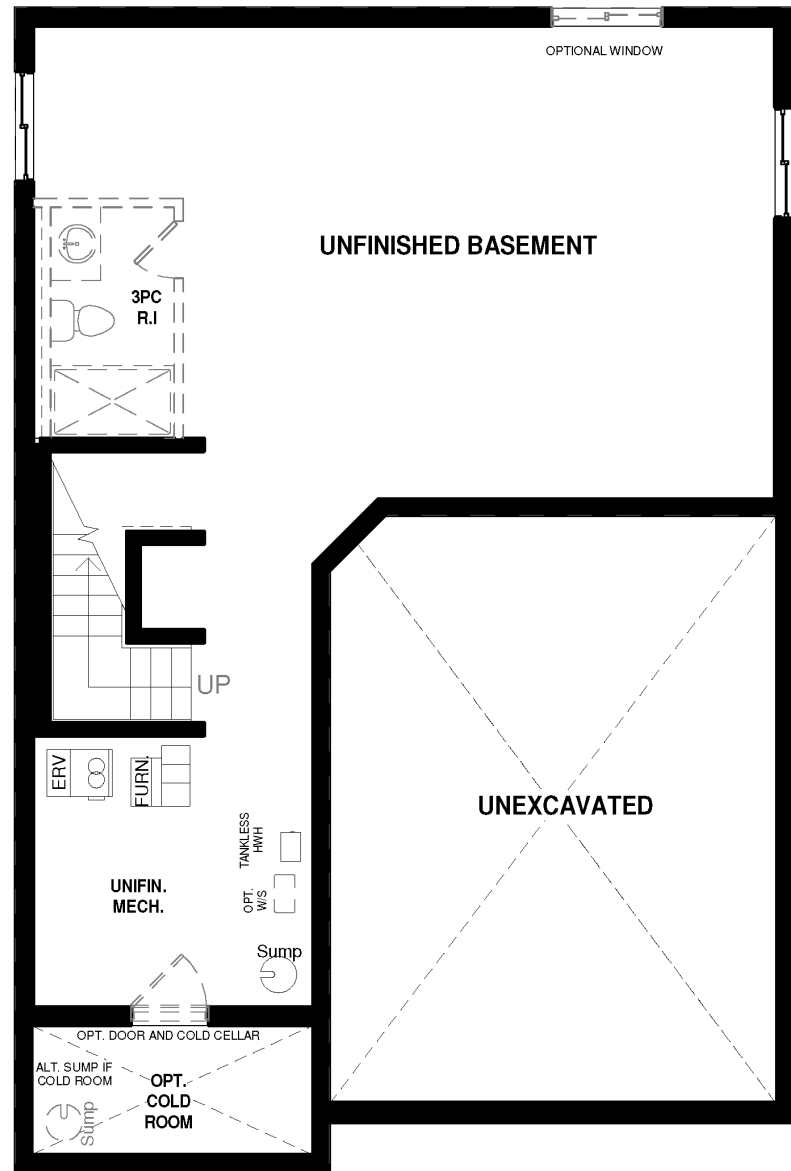
**THE FAWN | 2209 SQ.FT.**

3 | 2.5 | 2 | ELEVATION A

Renderings are artist's concept and may show upgraded or optional features not included with standard design. Floor plan may be mirrored. Dimensions, specifications and architectural detailing are subject to minor modifications. Indicated square footage may vary and may include open to above or open to below space. Final location of sump pump is based on site conditions, building code and zoning. See Sales Representative for Details. Broker Protected. E. & O.E. May 2024



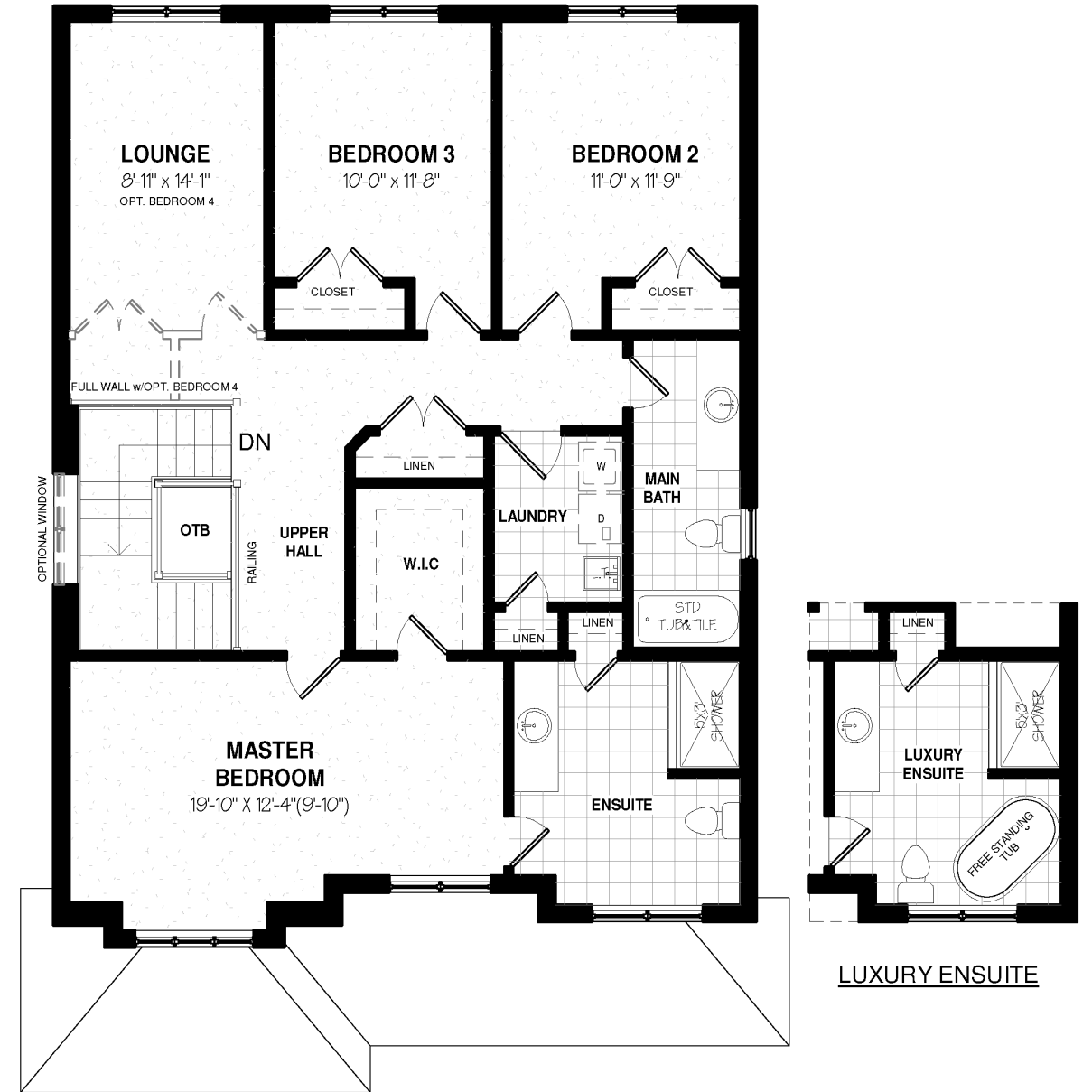
**40'**



**BASEMENT FLOOR PLAN**



**MAIN FLOOR PLAN-943 sq.ft.**



**SECOND FLOOR PLAN-1254 sq.ft.**  
**OTB-12 sq.ft.**

**THE FAWN | 2209 SQ.FT.**

3 | 2.5 | 2 | ELEVATION B

Renderings are artist's concept and may show upgraded or optional features not included with standard design. Floor plan may be mirrored. Dimensions, specifications and architectural detailing are subject to minor modifications. Indicated square footage may vary and may include open to above or open to below space. Final location of sump pump is based on site conditions, building code and zoning. See Sales Representative for Details. Broker Protected. E. & O.E. May 2024



**40'**