

STRASBURGA



EDGEWOOD
Urban Towns

989^{SQ.FT.}

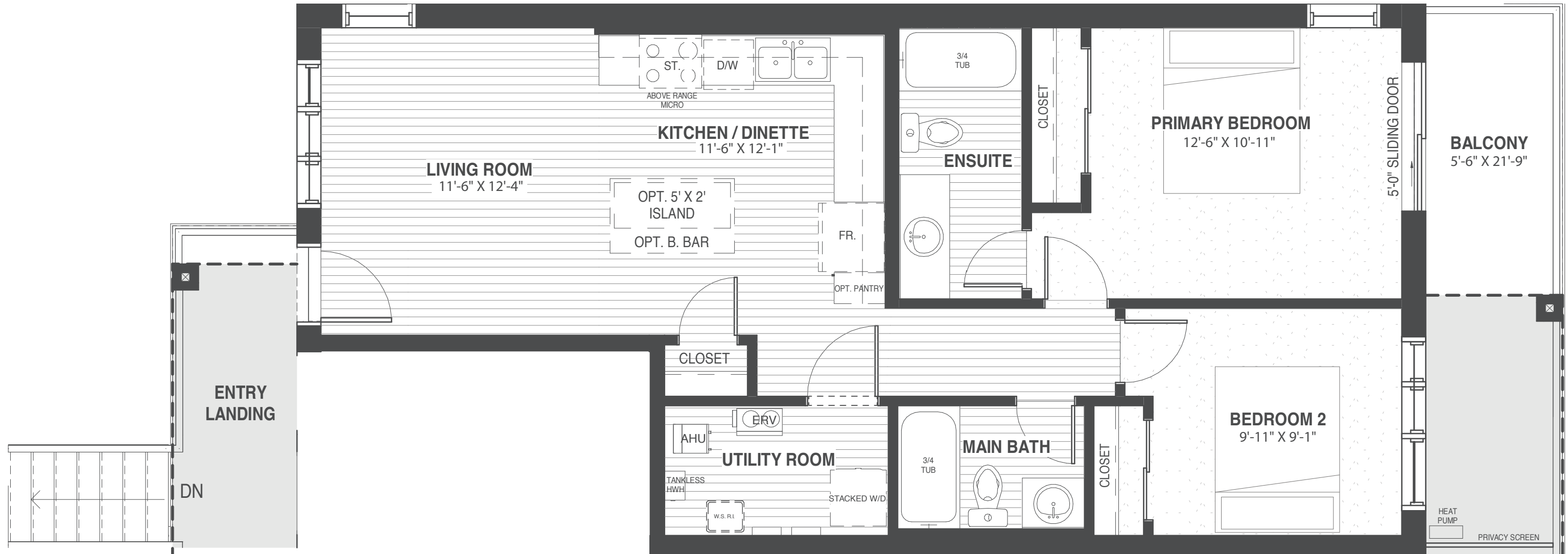
Includes 120 sq.ft.
Exclusive use of balcony

HURONCREEK.COM



WINDOW NOT INCLUDED ON UNITS A19,E2,I2 & J2

WINDOW NOT INCLUDED ON UNITS A19,E2,I2 & J2



STRASBURG A

GROUND FLOOR LEVEL
END UNIT

989 SQ.FT.

Includes 120 sq.ft.

Exclusive use of balcony.

Orientation of home may be reversed and purchaser agrees to accept the same. Steps and porches may vary at any exterior entrances due to grading variance. Actual usable floor space may vary from the stated floor area. All renderings are artists conception. Dimensions, specifications and architectural detailing are subject to minor modifications. Final location of sump pump is based on site conditions. Roofline and adjoining model types may vary due to siting. E.& O.E. August, 2024

