

# 38' PINEHURST

3 | 1 | 2

# 38' PINEHURST

3 | 1 | 2

ELEVATION B | 1200 SQ.FT.

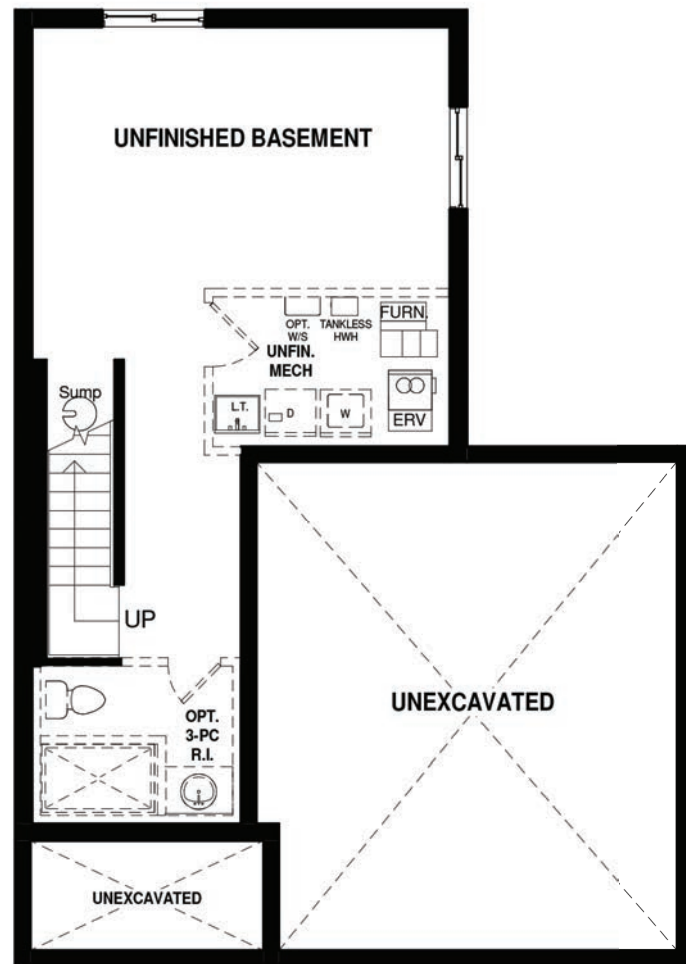


ELEVATION A | 1200 SQ.FT.

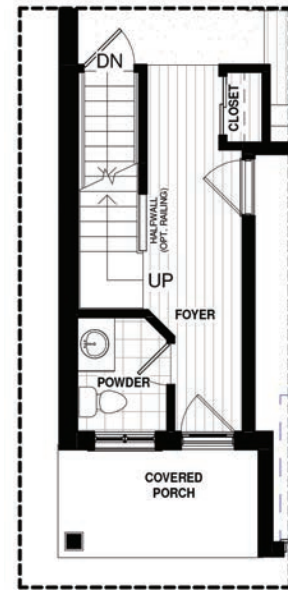


Renderings are artist's concept and may show upgraded or optional features not included with standard design. Floor plan may be mirrored. Dimensions, specifications and architectural detailing are subject to minor modifications. Indicated square footage may vary and may include open to above or open to below space. Final location of sump pump is based on site conditions, building code and zoning. See Sales Representative for Details. Broker Protected. E. & O.E. March 2026

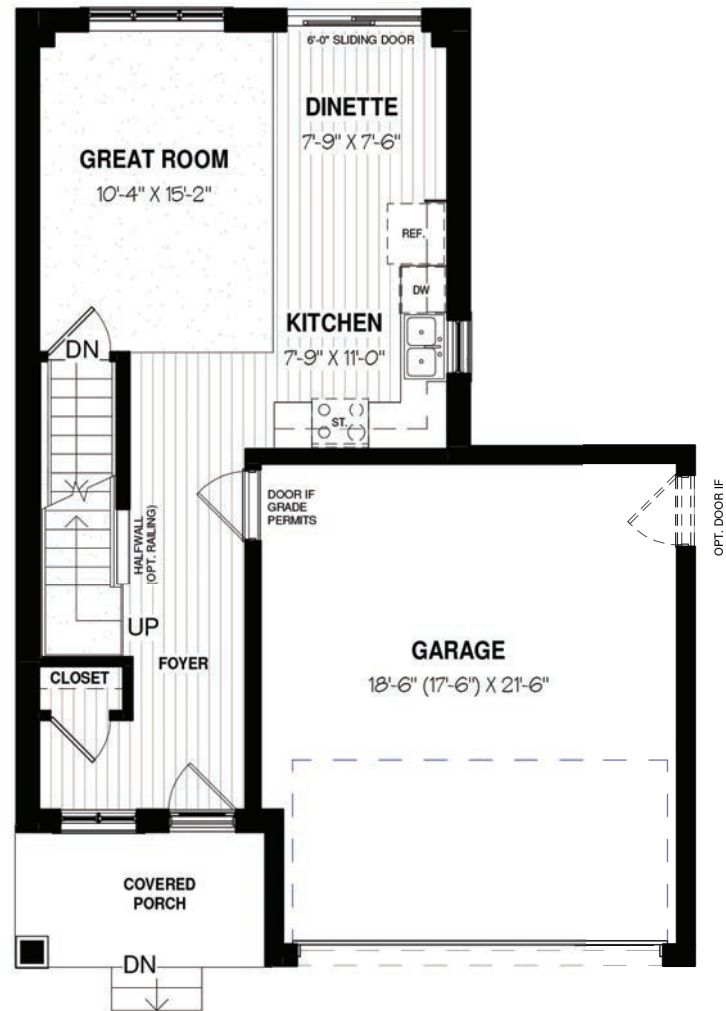




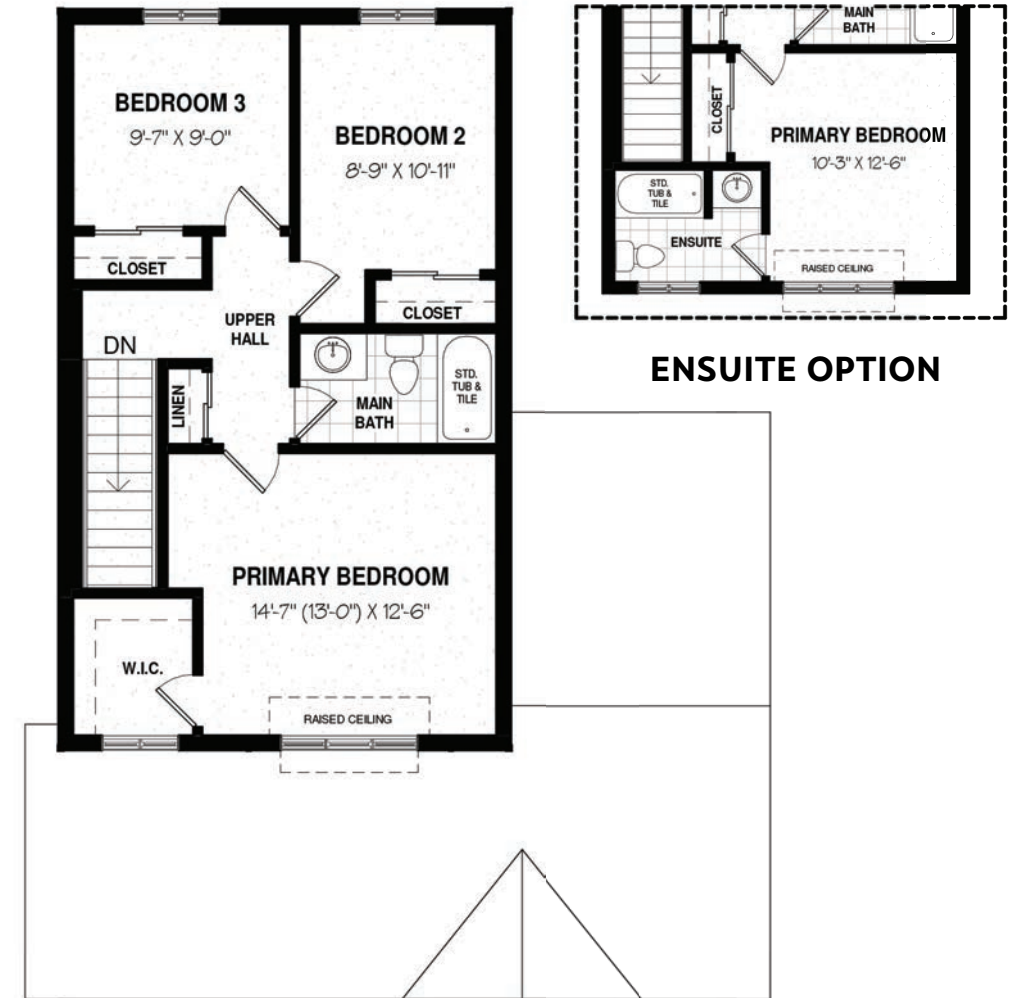
**BASEMENT FLOOR PLAN**



**POWDER ROOM OPTION**



**MAIN FLOOR PLAN - 578 sq. ft.**



**SECOND FLOOR PLAN - 622 sq. ft.**

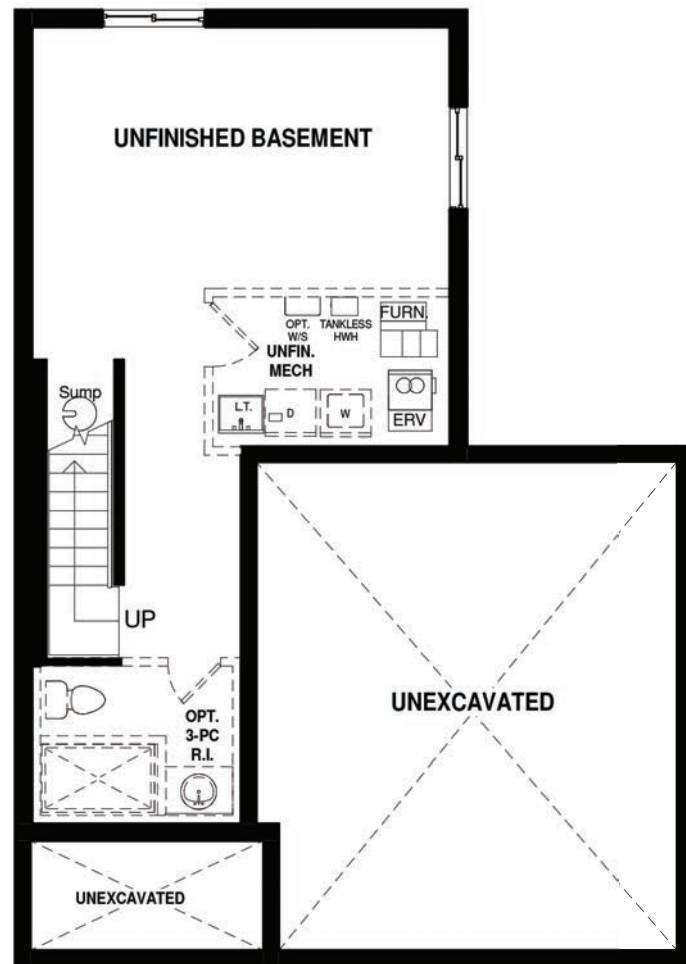
**PINEHURST | 1200 SQ. FT**

3 | 1 | 2 | ELEVATION A

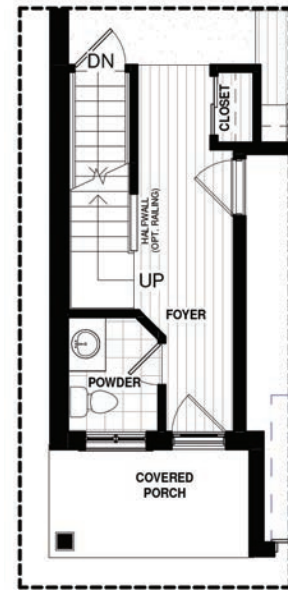
Renderings are artist's concept and may show upgraded or optional features not included with standard design. Floor plan may be mirrored. Dimensions, specifications and architectural detailing are subject to minor modifications. Indicated square footage may vary and may include open to above or open to below space. Final location of sump pump is based on site conditions, building code and zoning. See Sales Representative for Details. Broker Protected. E. & O.E. March 2026



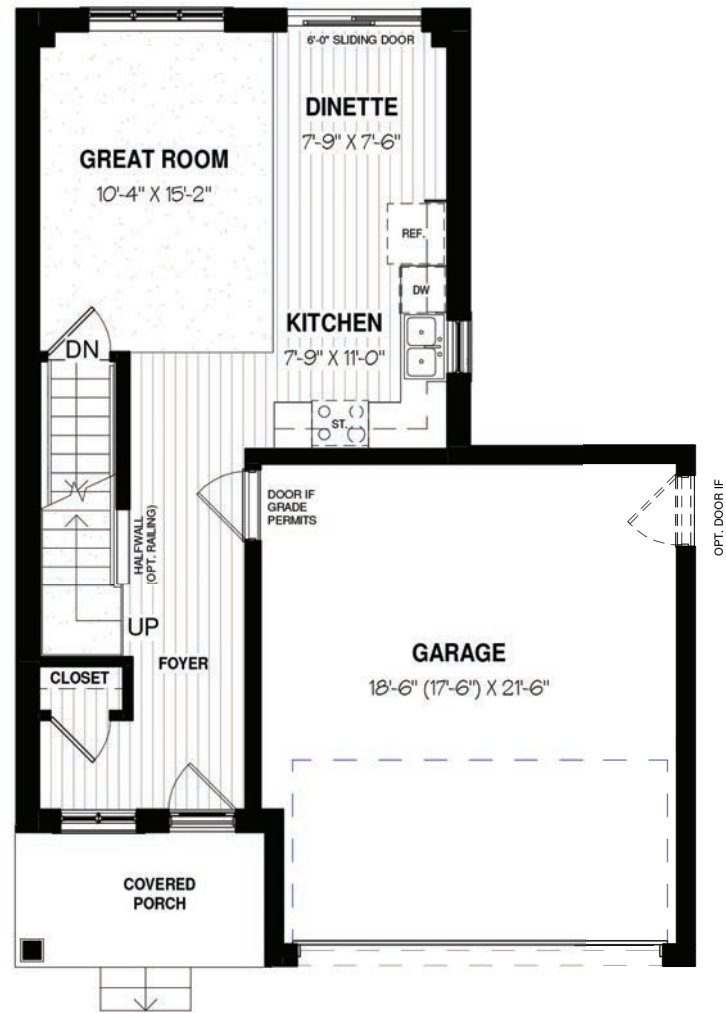
**38'**



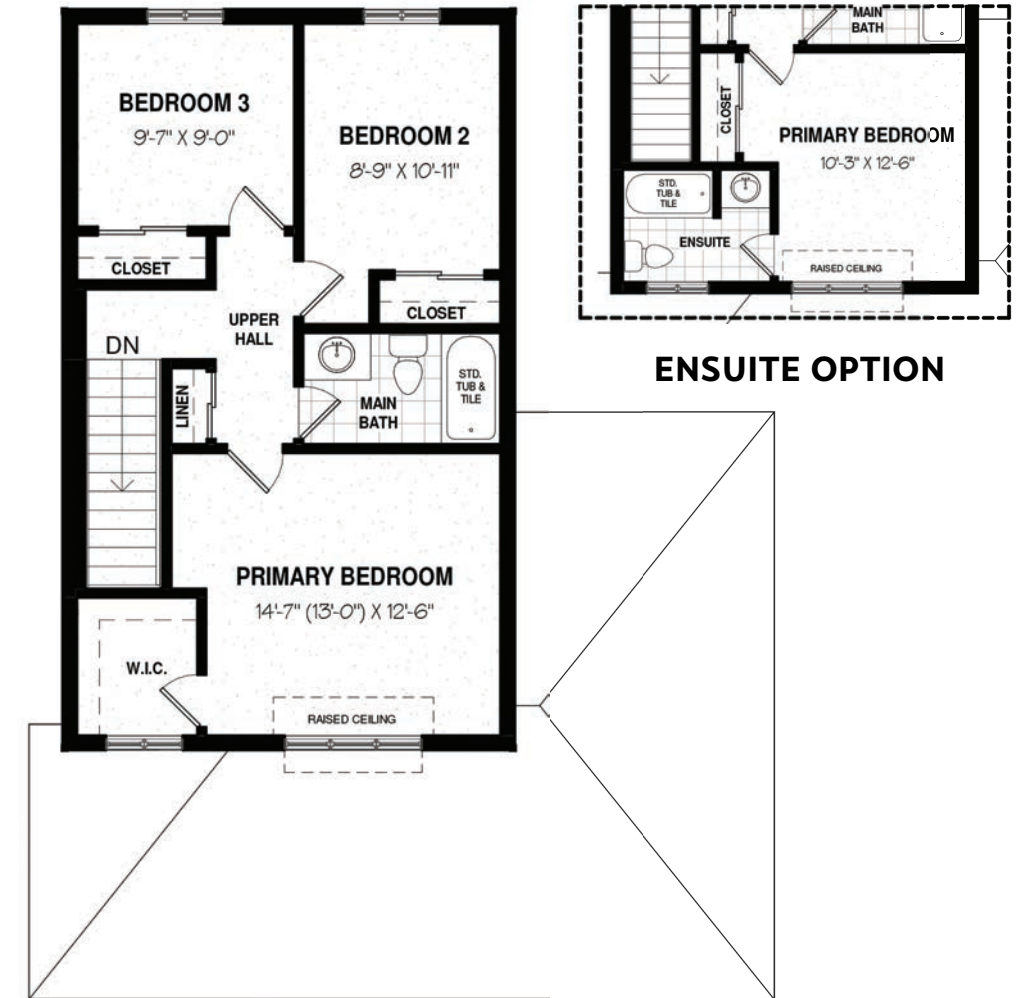
**BASEMENT FLOOR PLAN**



**POWDER ROOM OPTION**



**MAIN FLOOR PLAN - 578 sq. ft.**



**SECOND FLOOR PLAN - 622 sq. ft.**

**PINEHURST | 1200 SQ. FT**

3 | 1 | 2 | ELEVATION B

Renderings are artist's concept and may show upgraded or optional features not included with standard design. Floor plan may be mirrored. Dimensions, specifications and architectural detailing are subject to minor modifications. Indicated square footage may vary and may include open to above or open to below space. Final location of sump pump is based on site conditions, building code and zoning. See Sales Representative for Details. Broker Protected. E. & O.E. March 2026



**38'**